

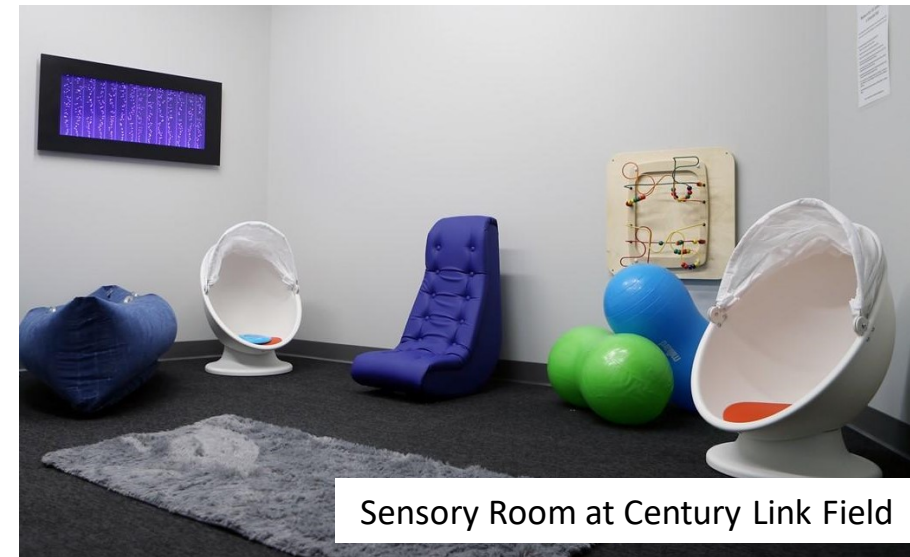
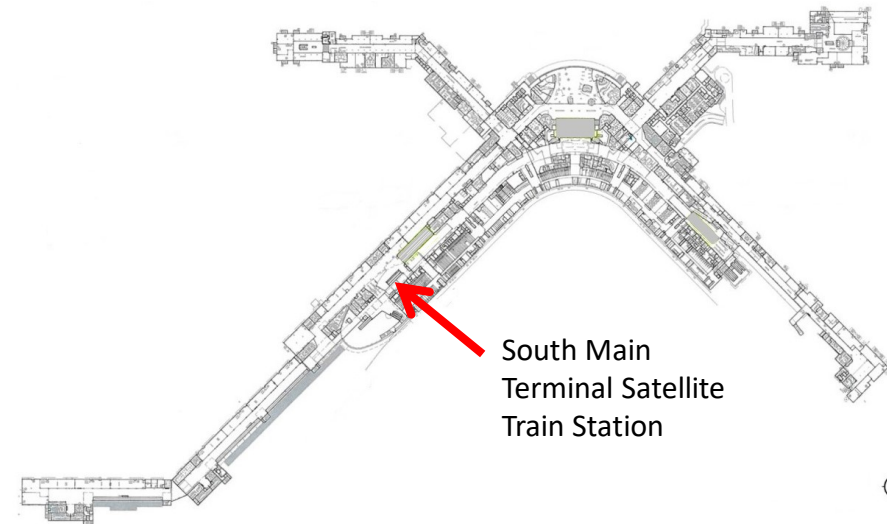
MEDITATION & SENSORY ROOMS

February 11, 2020

MEDITATION & SENSORY ROOMS

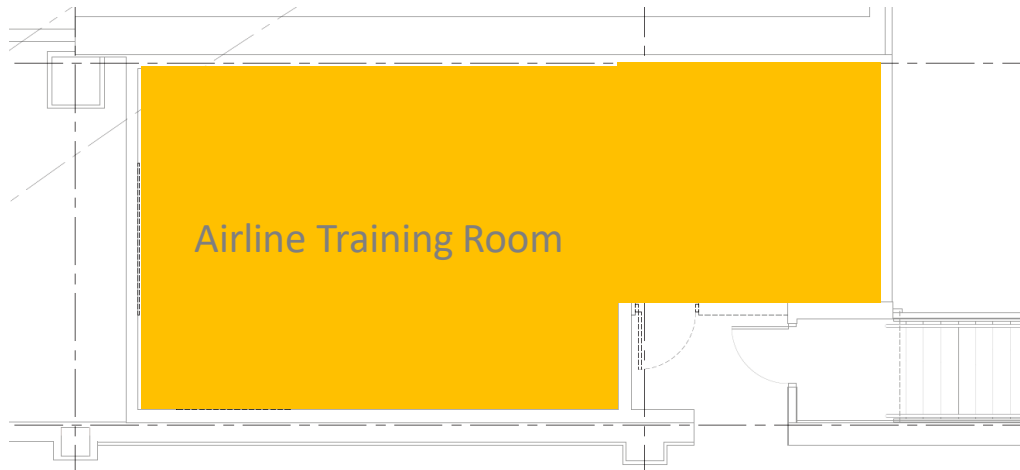
This project will convert a post-security conference room in the South Main Satellite Train Station (STS) into two rooms with a small vestibule.

One room will be a relocated Meditation Room and the other will be a Sensory Room.



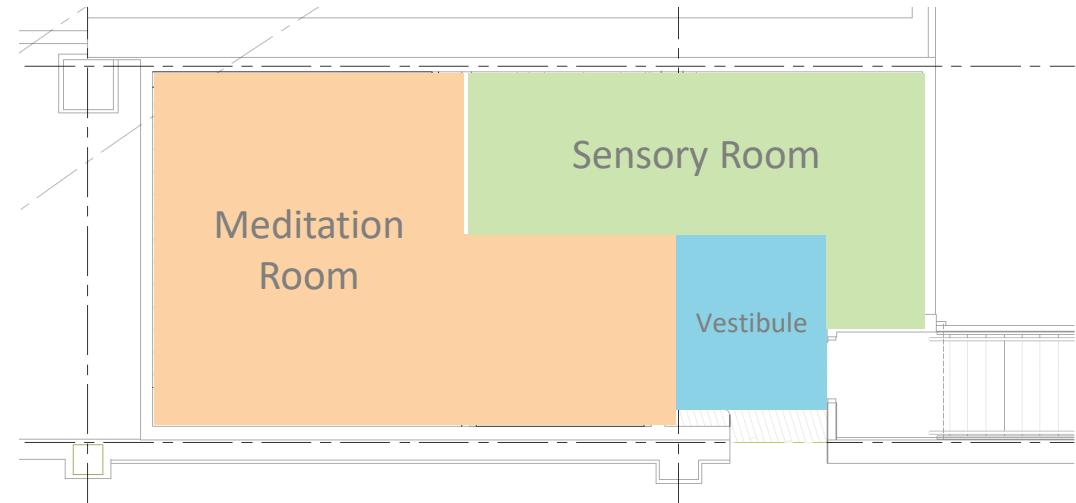
CHANGE OF USE

CURRENT CONFIGURATION



The Airline Training Room is being relocated to Mezzanine Level, pre-security

NEW CONFIGURATION



Opportunity for post-security meditation room and first sensory room at Sea-Tac

STAKEHOLDER ENGAGEMENT

MEDITATION ROOM

- Engaged with religious community stakeholders on requests/requirements (Q1 2019)
- Public testimony provided at the Commission Meeting demonstrated an interest and need to continuing to offer this amenity. (Q2 2019)
- Toured Training Room and reviewed preliminary floor plans with members of the religious communities (Q3 2019)
- Site visit to Evergreen Hospital Meditation Room with Stakeholders (Q1 2020)

SENSORY ROOM

- Engaged with Occupational Therapist on best practices (Q2 2019)
- Received input from parents of children on the autism spectrum of requests/ requirements (Q3 2019)
- Conducted a benchmarking exercise, engaging with other airports and public spaces who have integrated Sensory Rooms into their facilities: (Q1 2020)
 - Century Link Field
 - Miami International Airport
 - Pittsburgh International Airport
 - Birmingham-Shuttlesworth International Airport

MEDITATION ROOM



Current Meditation Room at SEA

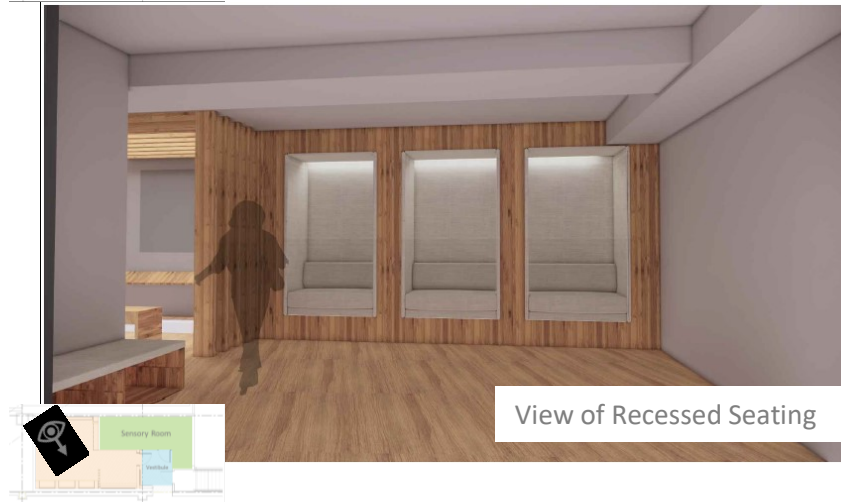
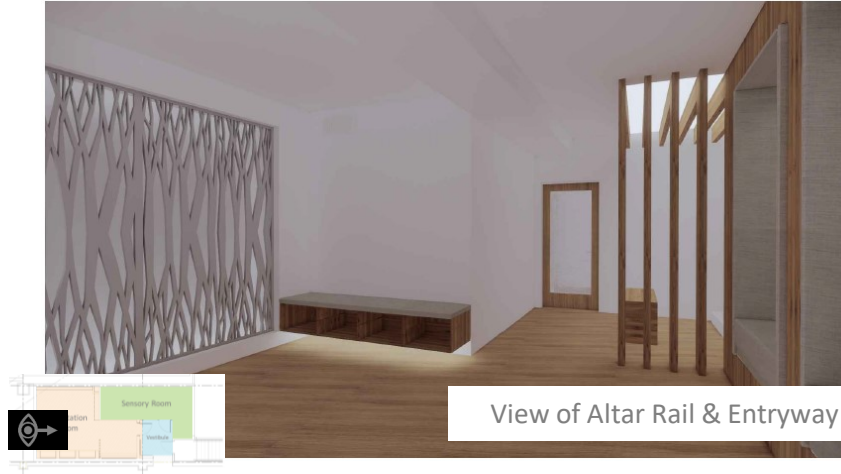
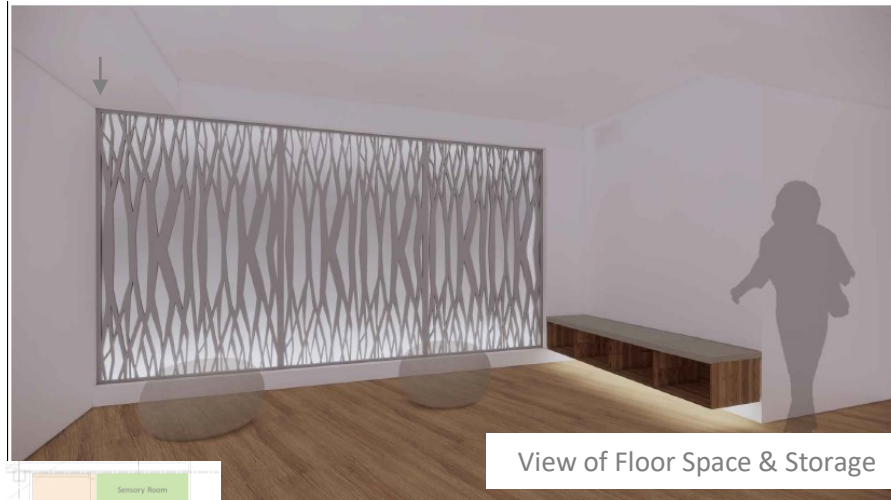


New Meditation Room at SEA

The Meditation room provides the airport community an inclusive facility that is a peaceful place for meditation, worship, general reflection, and quiet time for the traveling public and the airport community.

MEDITATION ROOM

CONCEPTUAL RENDERINGS



Design Features:

- Dimmable lighting
- Materials and patterns reflect biophilic design
- Open floor space to accommodate prayer
- Orientation to Qibla
- Open storage within space
- Altar rail
- Recessed seating for individual reflection
- Increased acoustic separation for quiet atmosphere.

SENSORY ROOM

A Sensory Room is a quiet area intended for passengers with neurological or developmental disabilities such as sensory processing disorders or autism spectrum disorder.

This project will create a specialized environment that passengers can interact with to help calm, prepare, or recover during the air travel experience through the use of specialized lighting, furniture, and materials.



New Sensory Room at SEA

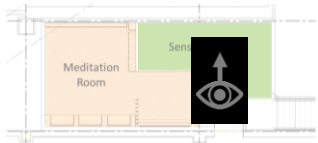
SENSORY ROOM

CONCEPTUAL RENDERINGS



Design Features:

- Dimmable lighting
- Variety of interactive seating including a rocking chair
- Textured wall panels
- Increased acoustic separation
- Resilient flooring
- Different zones for interaction
- Calm environment that is welcoming to all age groups.
- Graphics and materials reflect Northwest Sense of Place.



PROJECT SCHEDULE & BUDGET

- Project completion Q4 2020
- Project budget \$1,000,000

